



Crystalbrook

Kingsley

— Newcastle —

Conference And Events



Welcome to Newcastle

The second largest city in NSW and the epicenter of the Hunter Region, Newcastle provides all the amenities of a major city with the warmth of a friendly country town. Located an easy two-hour drive north of Sydney or quick flight into Newcastle airport.

Newcastle boasts a stunning coastline and natural attractions, exceptional food and bar offering and an arts and cultural scene with deep historical roots. Jump in the car and you could be wine tasting Australia's oldest wine region or whale watching in Port Stephens in less than an hour. It is easy to see why Newcastle is fast making a name for itself as a must-visit destination.

We acknowledge the Awabakal people who are the traditional custodians of this land which we live, work and stand on. We acknowledge their continuing living culture, connection to land, waters and community; we ask that you help look after and respect country. We acknowledge and extend our respect to Elders both past and present and upcoming future leaders.



Meet Crystalbrook Kingsley

Crystalbrook Kingsley is culturally connected, sustainably-led, simply sophisticated and steeped in history.

Located in the art and cultural centre of Newcastle, Crystalbrook Kingsley sees the cities historical administration centre re-imagined into a beautiful 130 room hotel equipped with dedicated meeting and event spaces, relaxed lobby café/bar with courtyard, and rooftop restaurant and bar that overlook our beautiful region.

In line with Crystalbrook Collection's commitment to Responsible Luxury, the Hotel makes use of environmentally friendly, upcycled, recycled and locally sourced materials wherever possible. The resort has a plastic free policy (no plastic water bottles or straws) and, through the use of technology, has removed 90% of paper used by a typical five-star hotel.

At a glance:

- Meeting room seats up to 32, or 40 standing
- Boardroom seats up to 8 guests
- Fully integrated AV, video conferencing and presentation facilities
- Rooftop restaurant and bar available for exclusive use and private events (Sunday to Thursday)
- 130 guest rooms including three master rooms
- Complimentary Wi-Fi throughout the hotel
- Underground parking available (subject to availability)
- Central location within Newcastle's Civic precinct
- Accessibility to Newcastle Airport and Newcastle light rail



Ms Mary

Overlook the bustle and architecture of Newcastle's historic centre from the terrace as you enjoy the warmth of Ms Mary café and bar.

Ms Mary evolves throughout the day transitioning from sunny lunch location, to end of day chill with some killer cocktails. Take advantage of our mobile food station for a live chef experience, or cocktail station to liven up the party with a unique experience for your guests.

Our menu celebrates the region's artisans and farmers, with 80% of fresh produce sourced within a three-hour drive of the hotel and wine list that features the best the Hunter Valley has to offer.

Ms Mary can accommodate up to 60 people..



Roundhouse

Positioned on the rooftop of one of Newcastle's most iconic buildings, it's hard to imagine a better vantage point of Newcastle's harbour, coastline and beyond to Hunter Valley.

Brandishing distinctly modern Australian cuisine, Roundhouse beats the drum for the region's abundance of world-class produce with a proudly Novocastrian spirit.

We believe in local, responsibly grown food with our chefs working in partnership with artisans, farmers and fisherman to present pared back dishes, free of pomp or pretension, that celebrate the beauty of the ingredients, fresh from the earth and sea...always with a little twinkle of surprise.

Our rooftop can accommodate up to 184 people.

Accommodation

Just what you needed for the perfect getaway: seriously sophisticated rooms where charm, culture and art collide.

Relax, unwind and take time to connect with Newcastle's thriving centre in sustainably considered luxury accommodation and the city's first five-star hotel.

Urban

Be in the thick of Newcastle's vibrant centre. Urban rooms are entry level option and offer beautiful plush finishes as well as the fantastic amenities throughout Crystalbrook Kingsley.

Harbour

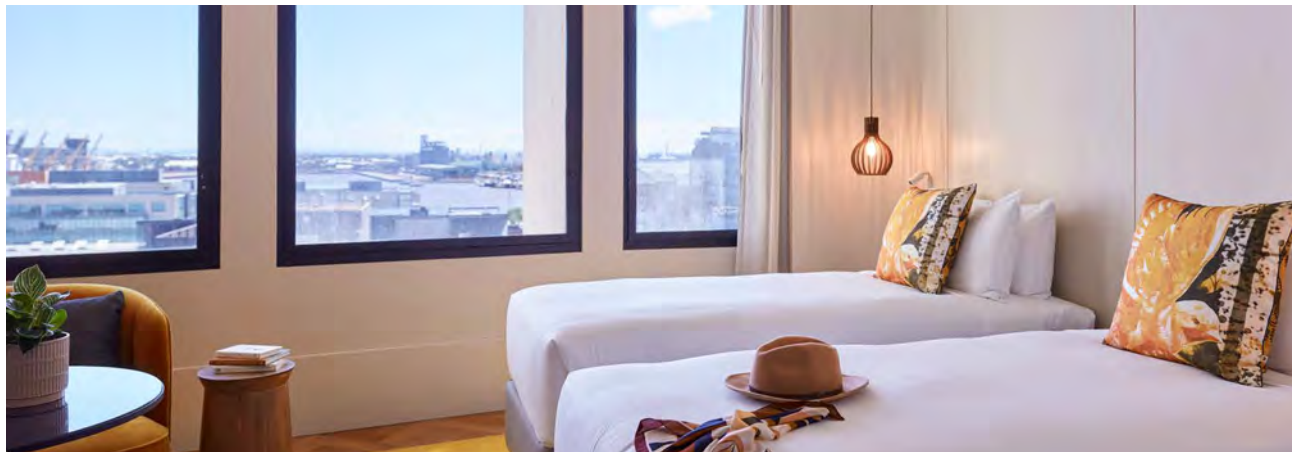
Pop, fizz, clink. Raise a glass and say cheers to your new abode overlooking Newcastle's harbour and thriving Honeysuckle precinct.

Park

Soak in lush views across Newcastle's Civic Park, with its sweeping green lawns and vibrant garden beds. Take the time to stop, sit and wonder from your beautiful room before heading out to explore.



Crystalbrook
Kingsley





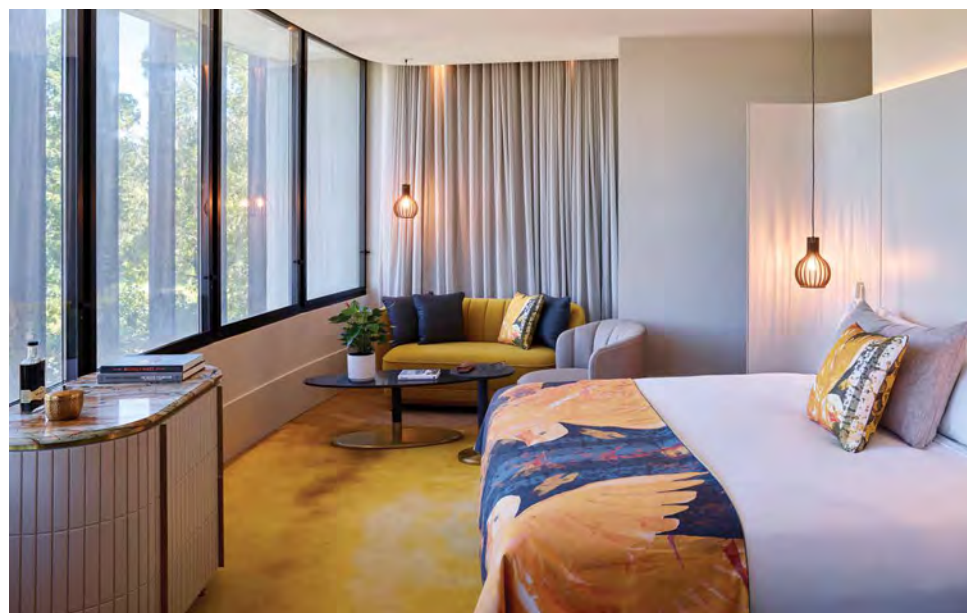
Accommodation

Park Master

Wake to a blend of nature and culture from this expansive 46m² king-sized master room. The Park Master boasts expansive views across Newcastle's Civic Park and Art Gallery, while having all the amenities and creature comforts you expect from a master room.

Kingsley Master

Overlooking Newcastle Harbour and bustling Honeysuckle Precinct, the Kingsley Master is perfect for those who appreciate the finer things in life. Our Master features a stunning bathroom with free standing bath, as well as custom armois and other touches of luxury.



Room Facilities

- 100% waste-free bathroom amenities
- Tablet Control Centre
- 55" HD Smart TV
- STAYCAST video streaming
- Complimentary movies
- Nespresso machine with recyclable pods
- Fast and free Wi-Fi



Event Spaces

Muloobinba

Named after the earliest Aboriginal reference to Newcastle, Muloobinba is our dedicated Board Room. The space can seat up to eight people around our beautiful handmade timber table. Equipped with full AV and control panel that can be managed easily from within your room.

Coal River

Coal River room is our larger meeting space, with capacity up to 40 people standing or 32 seated. This room boasts full AV with easy-to-use control panel, as well as fresh brewed coffee machine. The flexibility of this room lends itself to a range of activities and functions from formal meetings to informational seminars to cocktail functions.

Function room specification

Type	Room name	Room hire	Min pax	Max pax	M2	Banquet	Cocktail	Theatre	Classroom	U-shape	Cabaret	Boardroom	Hollow square
Boardroom	Muloobinba	\$550	1	8	27	8	NA	NA	NA	NA	NA	8	NA
Meeting Room	Coal River	NA	20	40	56	32	40	40	24	24	24	22	24
Terrace	Ms Mary Café and Bar	NA	NA	60	122	40	60	NA	NA	NA	NA	NA	NA
Rooftop	Roundhouse	NA	NA	184	358	130	184	NA	NA	NA	NA	NA	NA

Numbers are based on standard capacity, in the case of covid square metre rules please discuss with our Events Manager the capacity requirements of our spaces.

Ms Mary

Our beautiful ground floor café and bar with terrace that overlooks the historical Wheeler Place. This space provides a relaxed environment and versatility in food and beverage offerings, including the option of a feature outdoor food station.

Comfortable for up to 60 people standing, or 40 people seated.



Rooftop

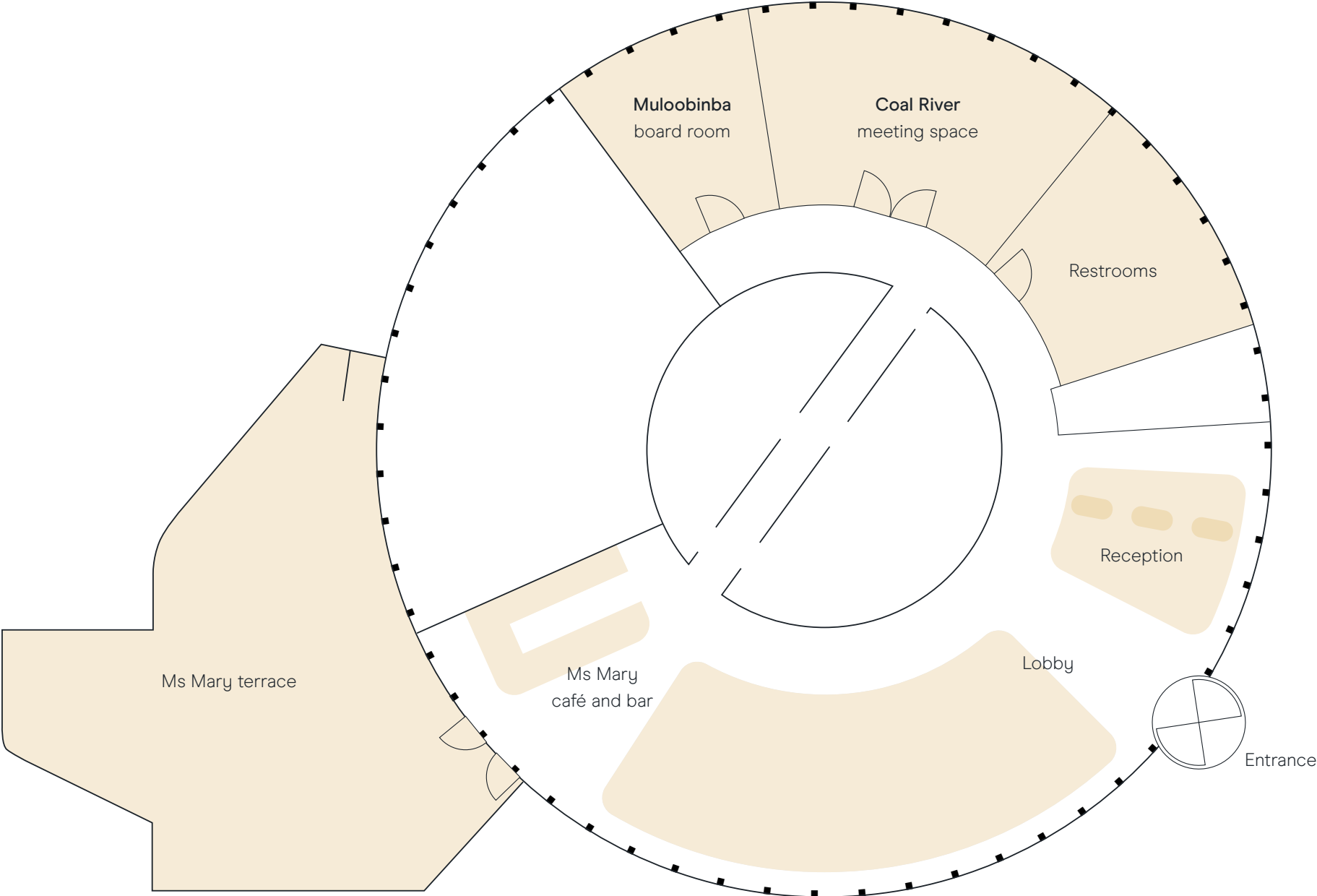
The feature venue of Crystalbrook Kingsley, you can book Roundhouse and Romberg's exclusively for your function. For an event your guests will be talking about for years to come, you can't go past this one.

The rooftop is available for exclusive use events and can host up to 124 people seated or up to 184 capacity for a cocktail style event.



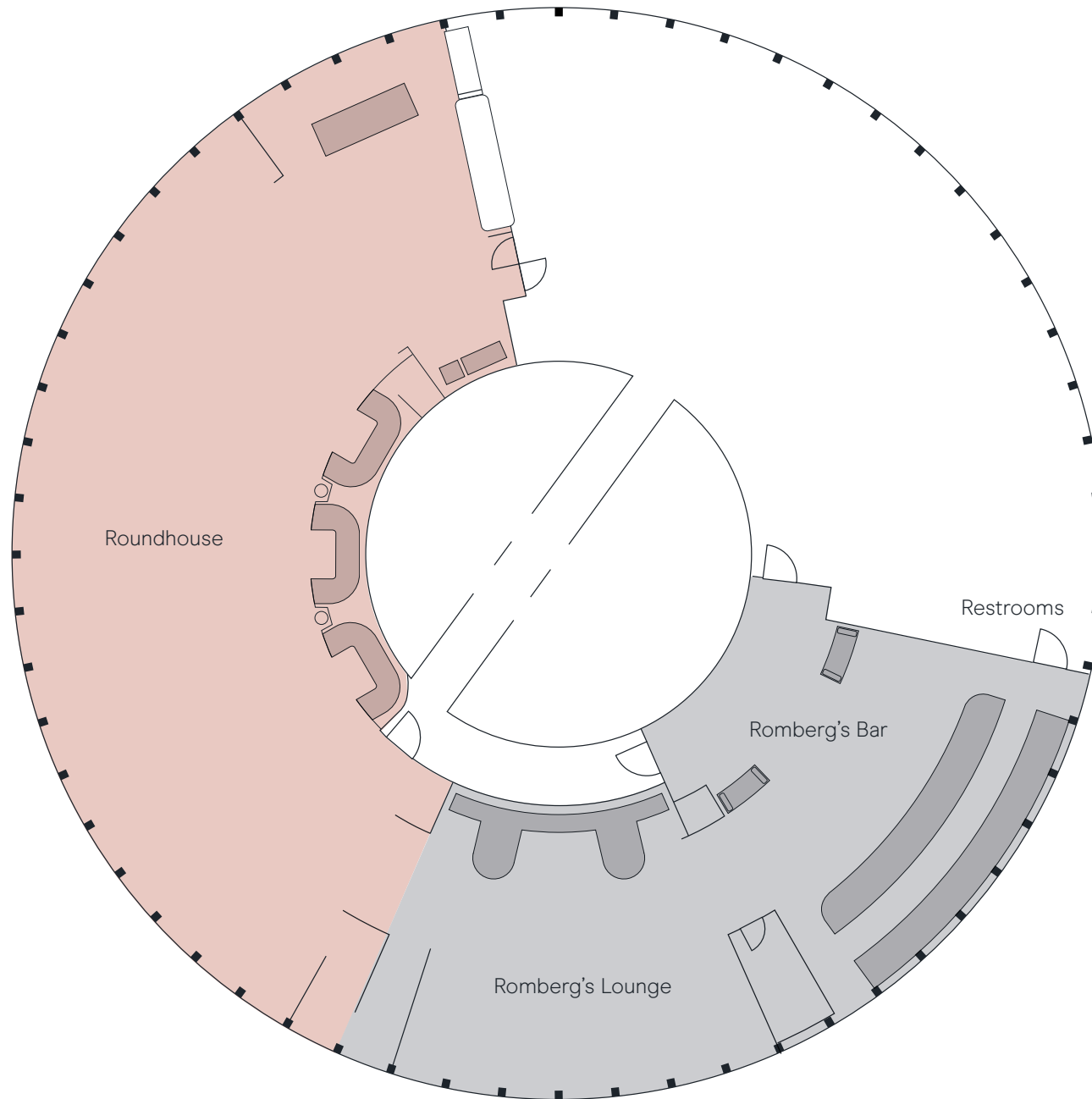
Event space floorplan

Ground floor



Event space floorplan

Rooftop





Ask Us About Meet Mindfully

Meet Mindfully is designed to remove the stressors and environmental pressures of conventional corporate meetings, instead facilitating meetings of purpose and value. Meet Mindfully provides delegates with a cleaner, slower, more conscious way to travel and gather for meetings and events.

Be inspired by the stunning transformation Crystalbrook Kingsley has gone through over the past years. The vibrant yet nostalgic energy of Newcastle shines in our meeting rooms, ready to spark curiosity and collaboration—and even a celebration. As a former Council Administration Centre, Crystalbrook Kingsley is in the heart of Newcastle. The City Hall, Art Gallery, Civic Theatre and even the War Memorial Cultural Centre are only moments away. Exploring Newcastle has never been easier.

We offer elevated extras to enhance your next meeting or event. Because gatherings here are one of a kind. Our team can curate a bespoke package that allows your delegates to creatively connect with each other.



Earp Distillery Gin Blending Class

Learn from the Earp Distillery team about the history of gin and distilling, exploring both traditional and contemporary gin profiles before they assist you with your very own gin blends. Each class lasts approximately one hour with each participant receiving two 200ml bottles of bespoke gin. Tables can be reserved for before or after the class to continue the fun.



Aboriginal Culture Tour

Hear and learn about the Worimi people's history, traditions, stories and the significance of the largest coastal sand dunes in the Southern Hemisphere. Culture combined with the exhilaration of riding a 400cc Quad Bike through an amazing cultural landscape. You will be exposed to a unique and dynamic hands-on experience that promotes traditional stories.



Newcastle Walking Tour

Venture on a personally curated tour of Newcastle, introducing you to the best kept secrets of Australia's second oldest city. Explore Newcastle architecture, street art, seascapes, and laneways to uncover hidden secrets and learn about the city's history and new developments.

Thank you

Contact

kingsley.events@crystalbrookcollection.com